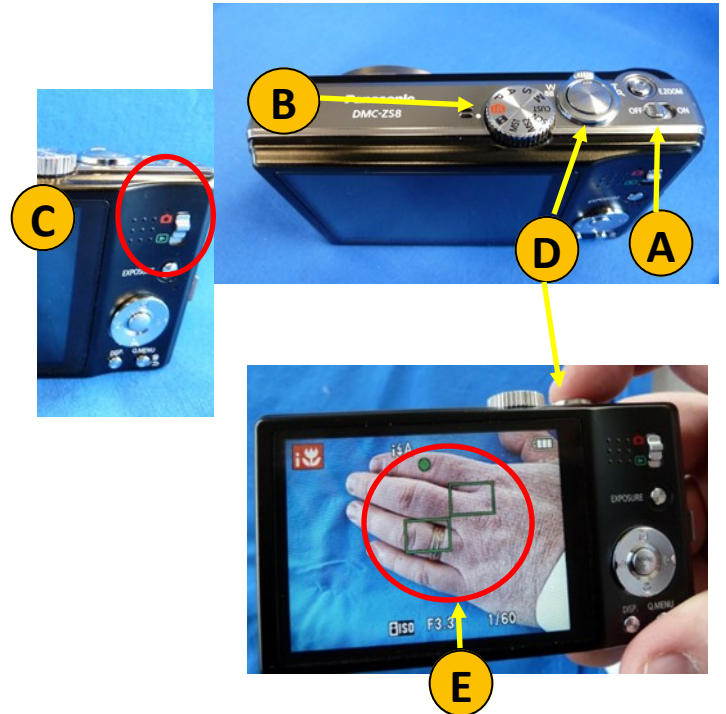


## Background

A digital camera can add critical information to a telemedicine case. The Panasonic DMC-ZS8 Digital Camera is simple to use and captures high quality images.


## Taking Still Images

1. Turn the camera on by sliding the On/Off switch to the right (A) and select the AUTO camera mode (B).
2. Slide the Capture/Review switch down (C) to check for images on the camera. Delete any existing images (see Deleting Images on the back of this Handy Guide).
3. Slide the Capture/Review switch up to place the camera back in picture taking mode.
4. Take a picture by depressing the shutter button (D) half-way down to set the autofocus (E). Depress the shutter button all the way down to take the picture.

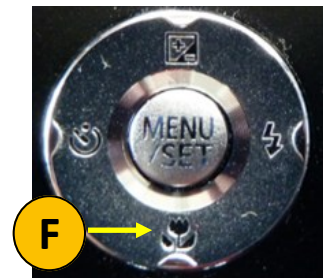


**Reminder: Take several pictures of the subject. Include close up view for detail and far away view for perspective. Use a ruler to provide a sizing reference for close up images.**

## Using the Macro Function


1. The Panasonic Camera should automatically switch to macro mode when focused on an object closer than 22 inches.
  - a. If the macro function doesn't preset automatically simply depress the macro symbol on the selection wheel (F). 

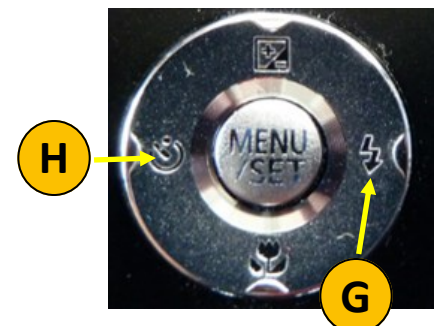
You should now see the macro icon in the viewfinder.



## Using the Flash Function

The Panasonic Camera automatically adjusts the flash. If you feel the flash is causing your subject to become washed out, you can manually turn the flash off:

1. Depress the flash on the icon selection wheel (G) 
2. Use the selection wheel to highlight no flash on the screen/viewfinder
3. Depress the MENU/SET button (H)



The flash is now off and will remain off until you select a new flash setting.

**Deleting Images**

**1**

Turn the camera on



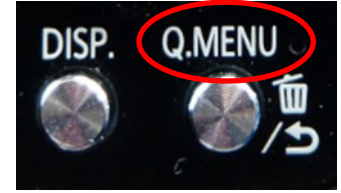
**2**

Select the Review Mode



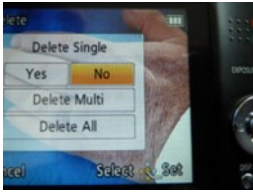
**3**

Press the "Q.Menu" button



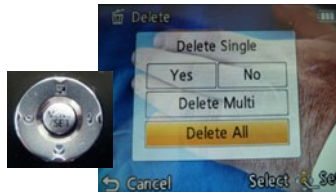
**4**

View the Delete Screen



**5**

Use selection wheel button to highlight desired delete option



**6**

Depress the MENU/SET button to delete images

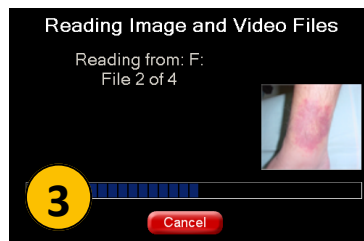


**Adding Images to a Telemedicine Case**

If you are using AFHCANcart

1. With the camera on, attach the USB cable
2. Select the "Digital Camera" button from the "Add to Case" screen
3. You will see images being loaded to your case viewer
4. Select, label and save desired images to your case

Note: Remember to delete images from the camera when done (see above)



If you are using AFHCANweb

1. Connect the USB cable to your computer and the camera
2. With the camera power on select PC with the cursor Menu/SET button
3. Select "Add Image/Video" from the "Add to Case" column in case options
4. Browse to the Panasonic Camera folder on your computer then select and label the image (s) you want to add to the case

Note: Remember to delete images when done (see above).

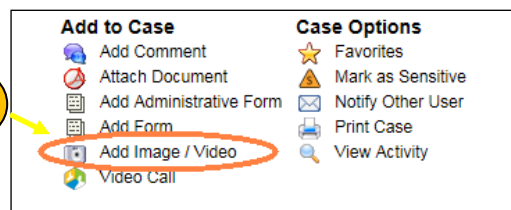
**1**



**2**



**3**



**4**

